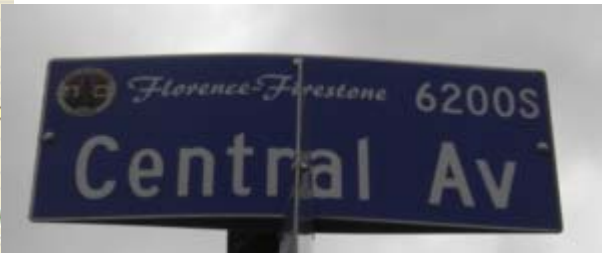
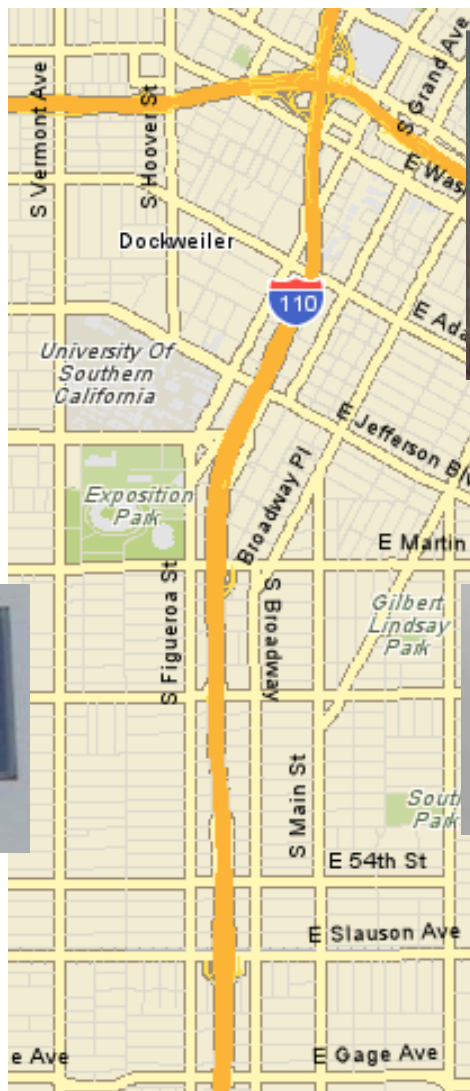


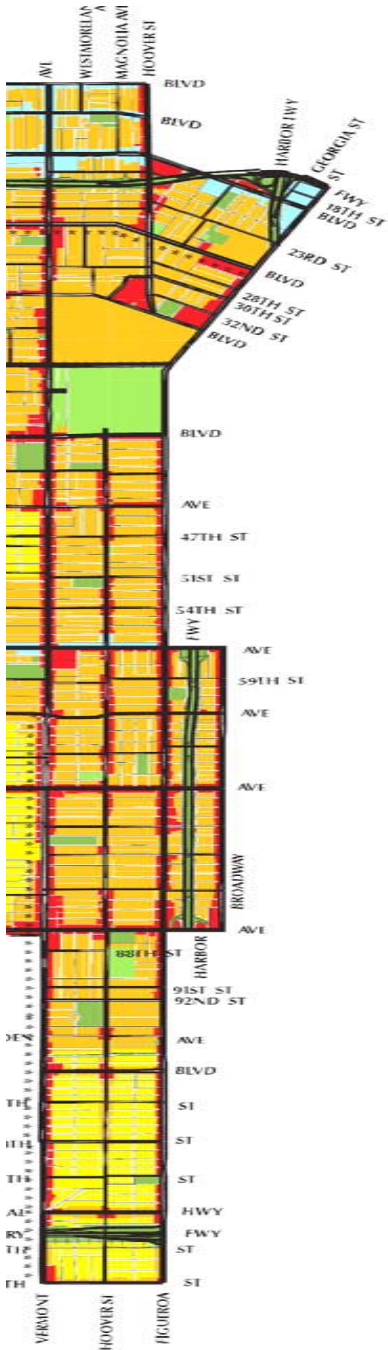
# Sharing Our Strengths



# Boundaries



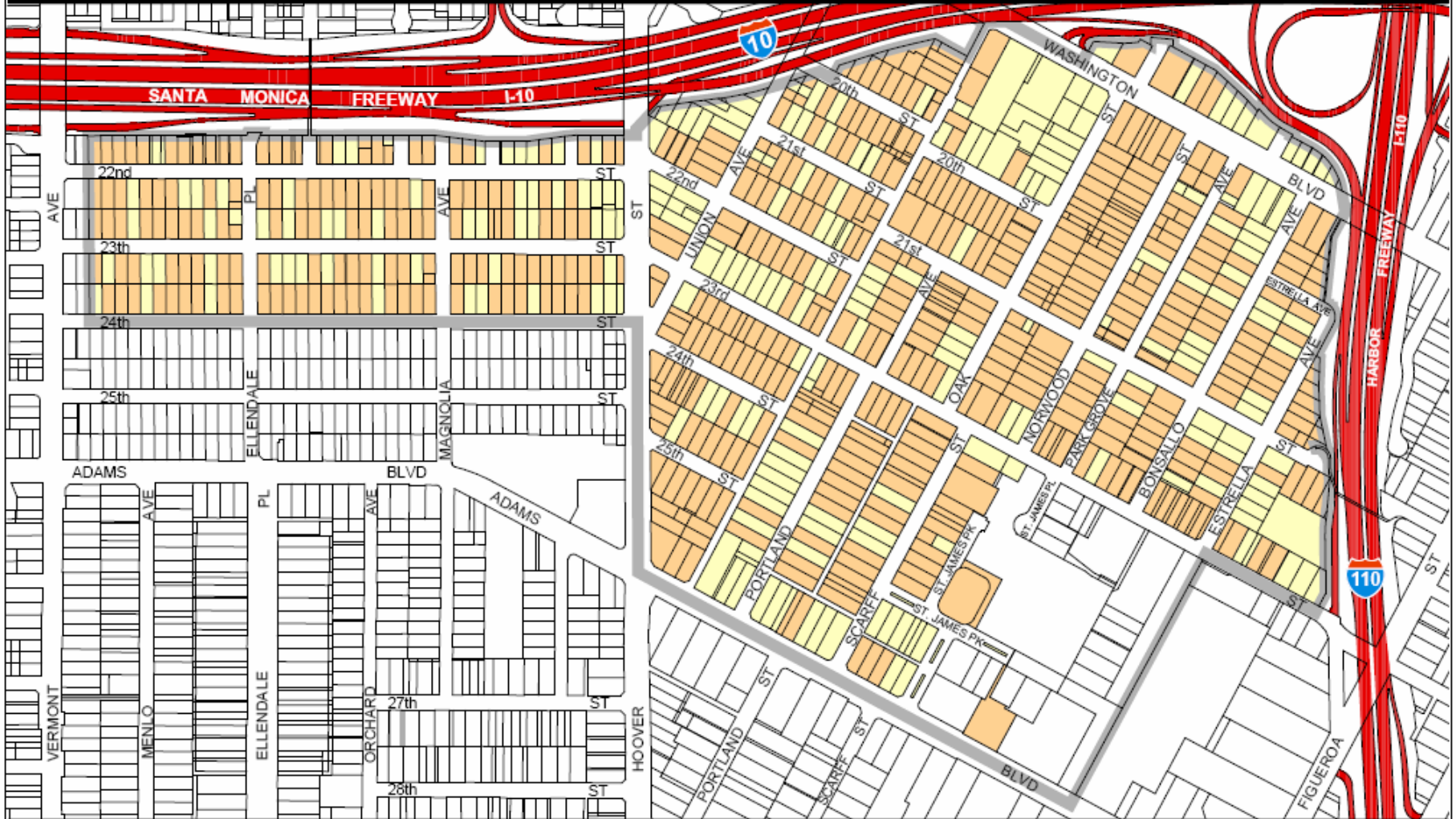
# Generalized Land Use



# University Park Historic Preservation Overlay Zone Architectural Survey: Structure Designation

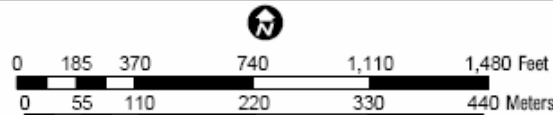
Ordinance 173,160  
Adoption Date: 03-22-2000  
Effective Date: 05-15-2000

CPC-1999-137-HPOZ  
Council File Index 00-0270

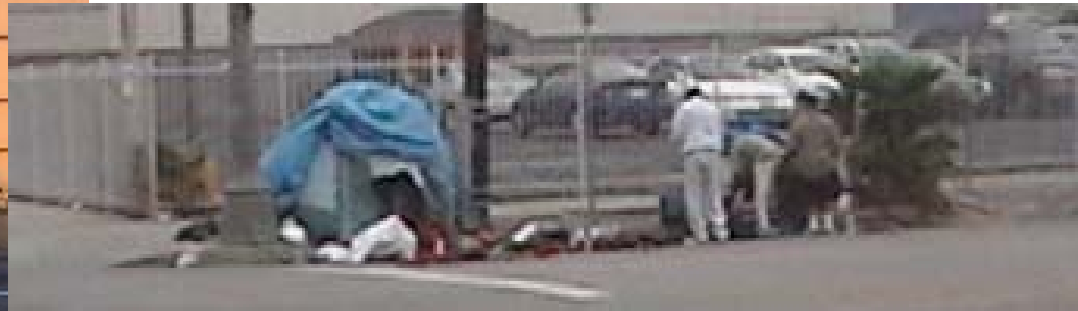


### Structure Designation

- Contributing Feature
- Non-Contributing Feature
- No Data
- HPOZ Boundary



# Housing



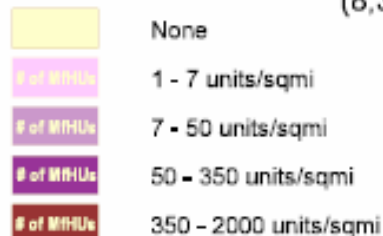
## Permits for New Residential Structures by Census Tract

— Community Plan Area Boundary

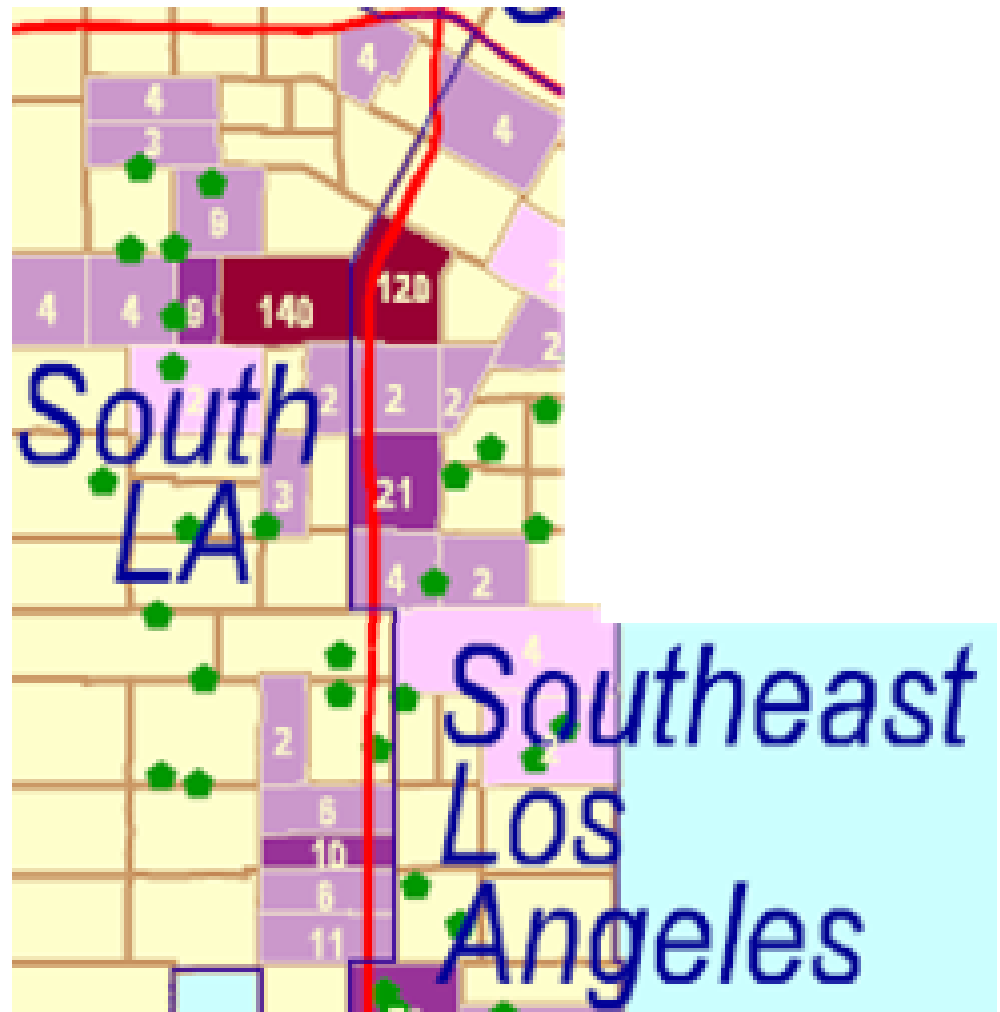
↗ Freeway

Single-family Housing Units (1,561 total)  
 • 1 Dot = 1 unit

Density of Multiple-Family Housing Units (8,321 total units)



Source: Department of Building and Safety  
 Prepared by:  
 Los Angeles Department of City Planning /  
 Demographics Research Unit / August 2005



STAPLES

# Businesses



# Community Redevelopment



# Community Redevelopment



# Health and Community Services



# Schools

32nd Street Elementary School

Norwood Street Elementary School

Norwood Street Children's Center

*John Adams Middle School*

Menlo Avenue Elementary School

52nd Street Elementary School

West Vernon Avenue Elementary School

FD Lanterman High School



# Mount St. Mary's College

Los Angeles, California



## HEBREW UNION COLLEGE - JEWISH INSTITUTE OF RELIGION

היברו יוניון קולג - מכון למדעי היהדות



# Higher Education

# ELECTED OFFICIALS

Senator Dianne Feinstein of California

Party: Democrat



Senator Barbara Boxer of California

Party: Democrat



Senator Kevin Murray

State of California 26<sup>th</sup> District

Party: Democrat

Representative Diane E. Watson  
of Congressional District number 33 of California  
Party: Democrat



Karen Bass

47<sup>th</sup> Assembly District

Party: Democrat

Mervyn M. Dymally  
52<sup>nd</sup> Assembly District  
Party: Democrat



Mark Ridley-Thomas

48<sup>th</sup> Assembly District

Party: Democrat



Ed Reyes

Council District 1

Party: Democrat



Bernard Parks

Council District 8

Party: Democrat



Jan Perry

Council District 9

Party: Democrat

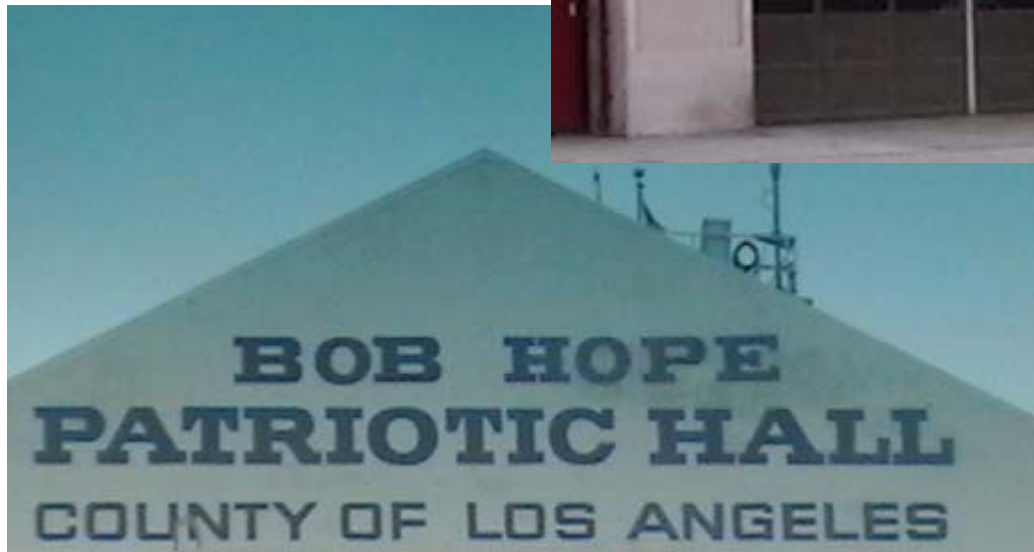


Yvonne B. Burke

County Supervisor 2<sup>nd</sup> District

Party: Democrat

# Government Services



# Cultural



Hoover-Gage Park

LOS ANGELES MEMORIAL SPORTS ARENA

HISTORIC  
CENTRAL AVENUE  
JAZZ CORRIDOR

APEX / CLUB ALABAMA  
42nd ST. and CENTRAL AV.

CLUB ALABAMA, THE SUCCESSOR OF THE ORIGINAL BLUE  
BLAZERS, SPENDS THE AFTERNOON THROUGHOUT THE WEEK. THE  
LATEST NIGHTCLUB WAS HOME TO SERIES FEATURING  
REPUTED SUPERSTARS IN EXTRAORDINARY CIRCUMSTANCES.  
JIMMY STEIN AND THE HOUSE BAND, BUT ALABAMA WAS  
THE MOST POPULAR STAGE FOR KNOWN JAZZ MUSICIANS  
WHO WERE ON CENTRAL AVENUE.

EXPOSITION Park

African American Museum Coliseum Sports Arena Natural History MUSEUM Rose Garden Science Center

Museums ↑  
Science Center  
Coliseum  
Sports Arena  
Ⓟ Parking

# Places of Worship



# Oneal Cannon



**Fidelity Educational  
Press**

# Assets Between 10 Freeway, Gage, Vermont And Central

**Schools: 57 (Public, private and parochial)**

**Libraries: 8**

**Businesses: 67 (Banks, florists, pet stores, auto sales/repair, bookstores, grocery stores, home improvement retail, etc. not including street vendors and mobile vendors.)**

**Churches: more than 300**

**Community Organizations/Labor Unions: 19**

**Post Offices: 7**

**Clinics/Health Services: 7**

**Neighborhood Councils: 2**

**Sports Entertainment: 8**

**Government Offices: 6**

**Cultural Institutions: 4**

**Parks: 7**